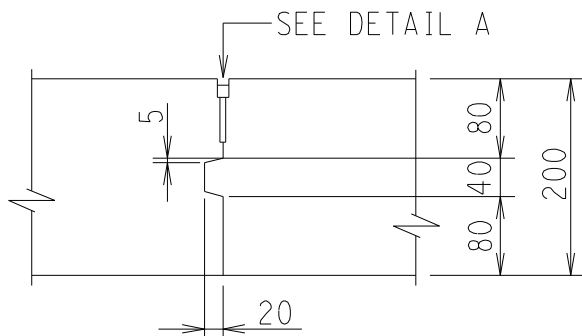
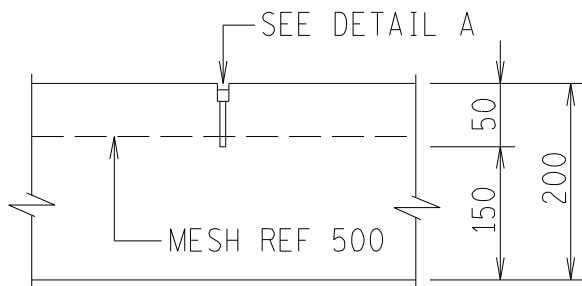
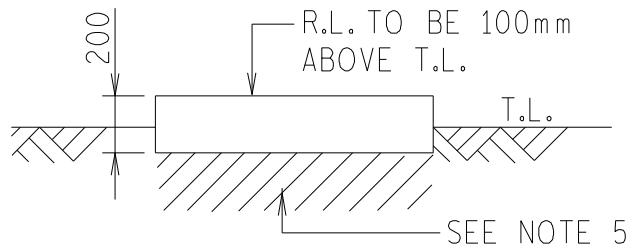
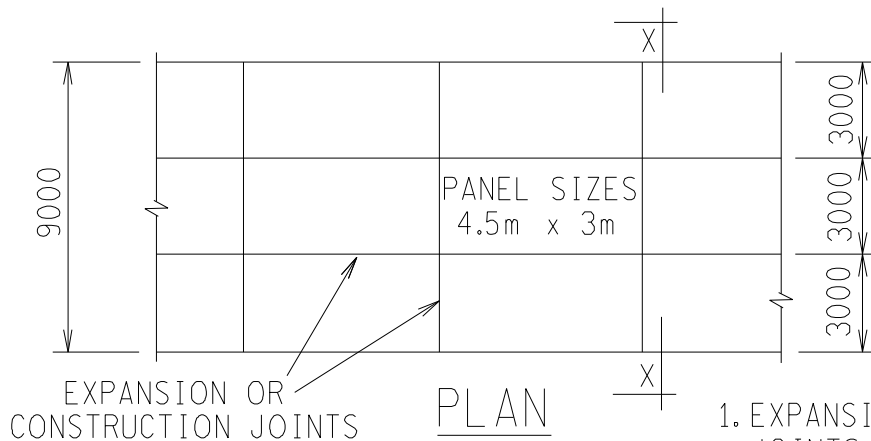
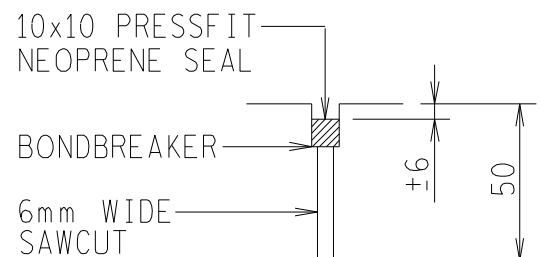


DETAIL 38C



NOTES

1. EXPANSION & CONSTRUCTION JOINTS ARE INTERCHANGEABLE.
2. SAWCUTS TO BE FORMED WITHIN 24 HOURS.
3. CONCRETE : GRADE=30MPa
W/C=2.0 MIN.
MAX. AGGREGATE=50mm
SLUMP=50mm MAX.
CEMENT CONTENT=335kg/m³ MIN.
4. COVER TO STEEL = 40mm
5. SUBGRADE : RIP 300mm, RECOMPACT IN 150mm LAYERS TO BOT. 93% AND TOP 95% MOD AASHTO
CBR=15 MIN. TOP LAYER
< 15% < 0.075mm
PI < 6
LL < 25
6. CONCRETE TO BE CURED BY PONDING OR CURING COMPOUND
7. ALL JOINTS TO BE SEALED WITH PRESSFIT NEOPRENE SEALANT.
SEAL ±6mm BELOW TOP SURFACE OF ROAD



DETAIL A

9m WIDE CONCRETE ROAD

TRANSMISSION
SUBSTATION
TECHNOLOGY



ESKOM

DRAWN
GETEKEN

GC

22-8
89

CHKD
NAGES

RJC

AUTH
MAS

REV

1

DATE
DATUM

27-01
1993

H.V. YARD CIVIL WORK
STANDARD DETAILS

0.54/390

SHEET 38C